



# Adobe™ Acrobat™ Distiller™

Version 1.0 for Macintosh®

## GETTING STARTED



### INSTALLATION

See the next page for instructions on how to install the program.



### READ ME

See the Read Me file installed with Acrobat Distiller for important information about the program.



### ON-LINE GUIDE

See the Acrobat Distiller on-line guide for a complete description of the Acrobat program.



### QUICK REFERENCE CARD

See the QRC for a brief description of the program's commands and features.

## Acrobat Distiller package contents

The Acrobat Distiller package includes the following items:

- The Acrobat Distiller program and associated files
- Adobe Type On Call™ CD-ROM
- The Adobe printer driver (PSPrinter) and associated files
- Adobe Acrobat Distiller Quick Reference Card for the Macintosh
- Adobe Acrobat Distiller Services Quick Reference Card for Macintosh Users
- Adobe Acrobat Distiller Services Quick Reference Card for Windows™ Users
- Adobe Acrobat Distiller Getting Started Card for Macintosh

## System requirements

To use the Macintosh version of the Acrobat Distiller, you need

- A Macintosh® II, PowerBook™, Centris™, Quadra™, or newer Macintosh (with a 68020 or later processor; a high-speed Centris or Quadra is recommended)
- Macintosh System Software version 6.0.5 or later (System 7.1 or later is recommended)
- 6 megabytes (MB) of application RAM (12 MB of application RAM is recommended)
- An 800K or Apple® SuperDrive floppy disk drive
- A hard disk drive with 10 MB of free space
- Acrobat Exchange or Reader software

## Installing the Acrobat Distiller

You should install either the Acrobat Exchange or Acrobat Reader program before you install the Acrobat Distiller program. The Acrobat Distiller uses the version of Adobe Type Manager™ (ATM™) that is installed with the Acrobat Exchange or Reader program.

### TO INSTALL THE MACINTOSH VERSION OF THE ACROBAT DISTILLER:

1. Lock the installation floppy disks before you begin the installation; for instructions, see your Macintosh documentation.
2. Turn off or remove any virus protection or system-security software.
3. Restart your Macintosh.
4. Insert the disk labeled *Installer-Disk 1* in the floppy disk drive. The disk window appears.
5. Using TeachText or any word processing application, open the *READ ME* file for the latest information about using the program.
6. Double-click the Acrobat™ Distiller™ Installer program icon. The Acrobat Distiller Installer title screen appears.
7. Click OK to continue. The Acrobat Distiller Installer dialog box appears.
8. Choose one of two options:
  - Click Install to install everything from all the disks.
  - Click Customize to select specific items to install. A dialog box appears, prompting you to select individual items to install; select the items you want to install and click Install.After you click install, a dialog box appears that prompts you for your name, the name of your organization, and the serial number of the Acrobat Exchange program. The serial number is located on the last page of this Getting Started card.
9. Enter the requested information, and click OK. The Installer begins copying files to your hard disk. Follow the instructions that appear on-screen to complete the installation.
10. After installation completes, turn on or replace any virus-protection or system-security software that you turned off or removed in step 2. You may have to restart your Macintosh to turn on the virus-protection or system-security software.

For the latest information about the Acrobat Distiller program, open the *Distiller README* file using TeachText or any word processing application. The file is located in the Acrobat Distiller program folder. This file contains important information about using the Acrobat Distiller program.

*Note: The Acrobat Distiller Installer replaces the ATM Font Database file that was installed by the Acrobat Exchange or Reader Installer by renaming the original file as ATM Font Database.old and installing a new file with more information. To save disk space, you can delete ATM Font Database.old from your System Folder.*

## Viewing the Acrobat Distiller on-line documentation

The Acrobat Distiller Installer creates a Docs folder in the Acrobat Distiller application folder, and places the following files in that folder:

- *Acrobat™ Distiller™ Help*, the *Adobe Acrobat Distiller Program On-line Guide*
- *pdfmark.pdf*, the *pdfmark Reference Manual*. (*pdfmark* is an operator that PostScript language programmers can use to define notes, bookmarks, links, and page-cropping instructions in PostScript language files that are subsequently processed by the Acrobat Distiller program.)

To open these documents, start the Acrobat Exchange or Acrobat Reader program, choose Open from the File menu, open the Docs folder, and double-click the name of the document you want to see.

## The Adobe printer driver (PSPrinter)

The Adobe printer driver replaces the standard Apple LaserWriter driver and offers many features that represent a dramatic improvement over the LaserWriter printer driver. For example, the Adobe printer driver software package includes PostScript Printer Description (PPD) language files that the driver uses to let you control all of your printer's features, such as optional paper trays and duplex (two-sided) printing. The Adobe printer driver also has many options for creating PostScript language files, including whether or not to include Type 1 font information and whether to create PostScript Level 2 or Level 1 software files.

The disk labeled *Adobe Printer Driver Disk 2* contains a file named *PSPrinter User Guide.pdf*, which is a PDF file for the *Adobe Printer Driver User Guide, Macintosh Version*. To install the Adobe printer driver, copy the *PSPrinter User Guide.pdf* file to your hard drive, open the file using the Acrobat Exchange or Acrobat Reader program, and follow the instructions in Chapter 1, "Installing the Adobe Printer Driver."

## Adobe Type On Call software

The Adobe Type On Call CD-ROM contains all the typefaces in the Adobe Type Library that were available when the CD-ROM was created. The fonts on the Type On Call CD-ROM are locked. To unlock a font, call Adobe and purchase the font. When you purchase a font, you are given a key to unlock the font. As delivered with the Acrobat Distiller program, the Type On Call CD-ROM includes two font families that are unlocked and available for your use. See the documentation included with the Type On Call CD-ROM for more information.

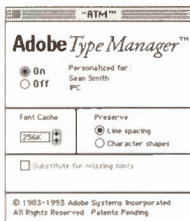
## Selecting ATM options

The Adobe Type Manager program gives all your applications a WYSIWYG (What You See Is What You Get) display for Adobe Type 1 fonts. ATM uses Type 1 outline fonts to automatically create bitmapped fonts of any size for your screen display. The ATM program also prints Type 1 fonts to non-PostScript printers. For the latest information about the ATM software, see the *ATM README* file, installed in the Acrobat folder.

### TO SELECT ATM OPTIONS:

To select ATM options, you use the ATM Control Panel, which was installed during installation of the Adobe Acrobat software.

1. Choose Control Panel(s) from the Apple menu.
2. Open the ATM Control Panel, either by clicking the ATM program icon if you are using System 6, or by double-clicking the ATM program icon if you are using System 7.



3. Select the desired ATM options, as follows:

- *On/Off* turns the ATM software on and off.
- The *Font Cache* determines the amount of system memory used to temporarily store bitmapped characters created by ATM. The default font cache is 256K; Adobe recommends at least 50K for each Type 1 font that you use frequently.
- *Preserve Line Spacing* reduces the size of accented characters to fit within the current line height.
- *Preserve Character Shapes* maintains the size of accented characters and increases the size of the current line height to accommodate the larger characters.
- *Substitute for Missing Fonts* instructs ATM to create substitute fonts for missing fonts.

LDW102R3100394-002-809



Adobe Systems Incorporated 1585 Charleston Road, P.O. Box 7900, Mountain View, California 94039-7900  
Adobe Systems Europe B.V. Europaplaza, Hoogoorddreef 54a, 1101 BE Amsterdam Z-O, The Netherlands  
Adobe Systems Japan Swiss Bank House, 4-1-8 Toranomon, Minato-ku, Tokyo 105, Japan

Adobe, the Adobe logo, Acrobat, the Acrobat logo, Adobe Type Manager, ATM, PostScript, and Type Reunion are trademarks of Adobe Systems Incorporated which may be registered in certain jurisdictions. Apple, LaserWriter, and Macintosh are registered trademarks, and Centris, PowerBook, and Quadra are trademarks of Apple Computer, Inc. Classic is a registered trademark licensed to Apple Computer, Inc. \*Helvetica and Times are trademarks of Linotype Hell AG and/or their subsidiaries.

ITC Zapf Dingbats is a registered trademark of International Typeface Corporation.  
©1993 Adobe Systems Incorporated. All rights reserved. Part No. 0199 6310 (5/93)